

A decorative graphic on the left side of the slide. It features several vertical stripes of varying widths and shades of light blue and grey. Overlaid on these stripes are five dark blue circles of different sizes, arranged in a cluster that tapers downwards.

# **CHOICE DENTAL CENTERS OFFICE TOUR**

# CHOICE DENTAL CENTERS-CHINATOWN OFFICE

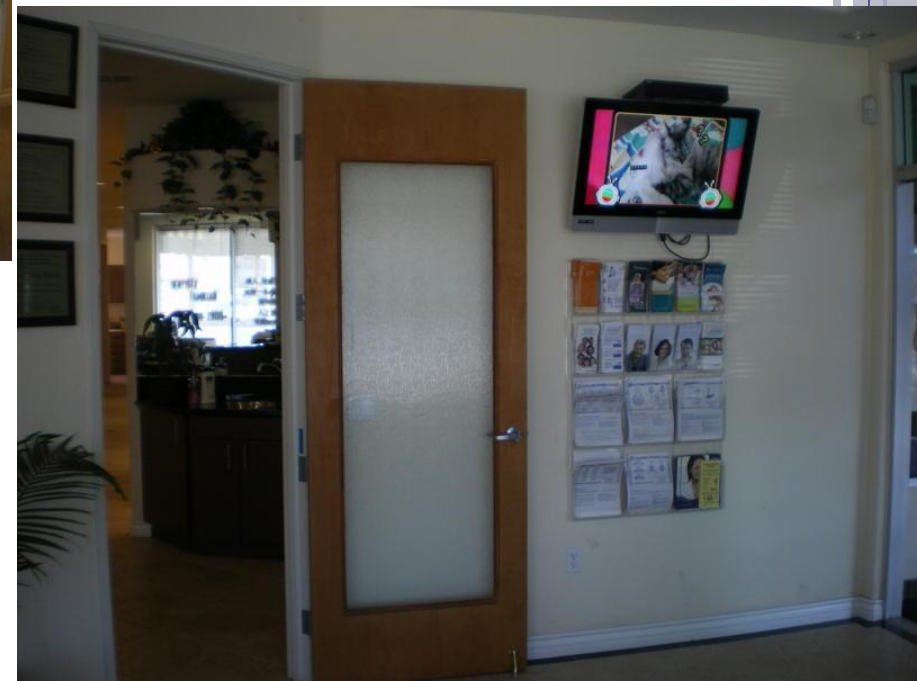


# CHOICE DENTAL CENTERS-WEST COVINA OFFICE

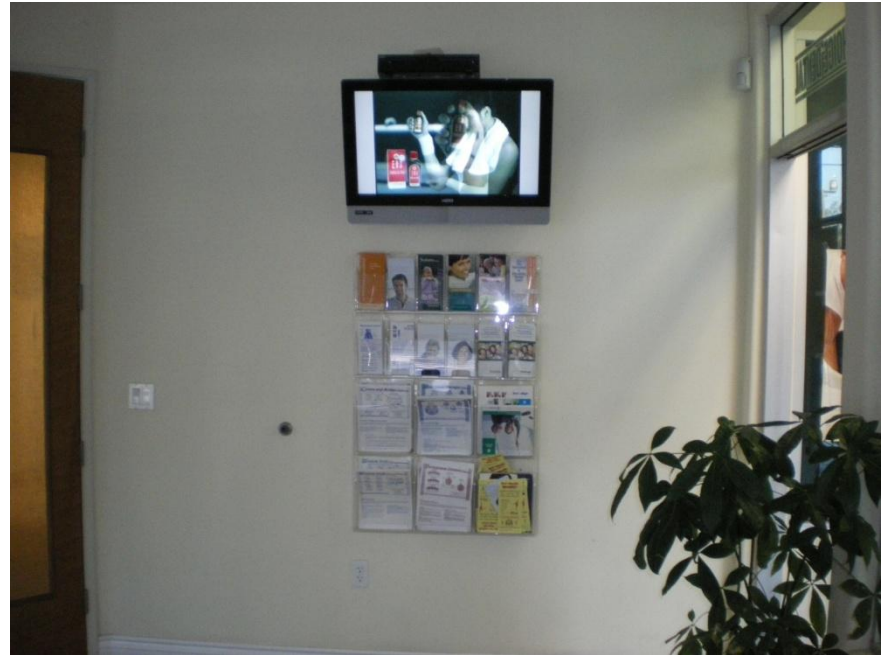




# CHOICE DENTAL CENTERS-RECEPTION DESK & WAITING ROOM



# CHOICE DENTAL CENTERS-TREATMENT ROOMS



Oral Healthcare  
Pamphlets



# CHOICE DENTAL CENTERS-TREATMENT ROOMS





# CHOICE DENTAL CENTERS-DIGITAL X-RAY



Digital Images



PANOREMIC-Cephalometric RADIOGRAPHIC Unit

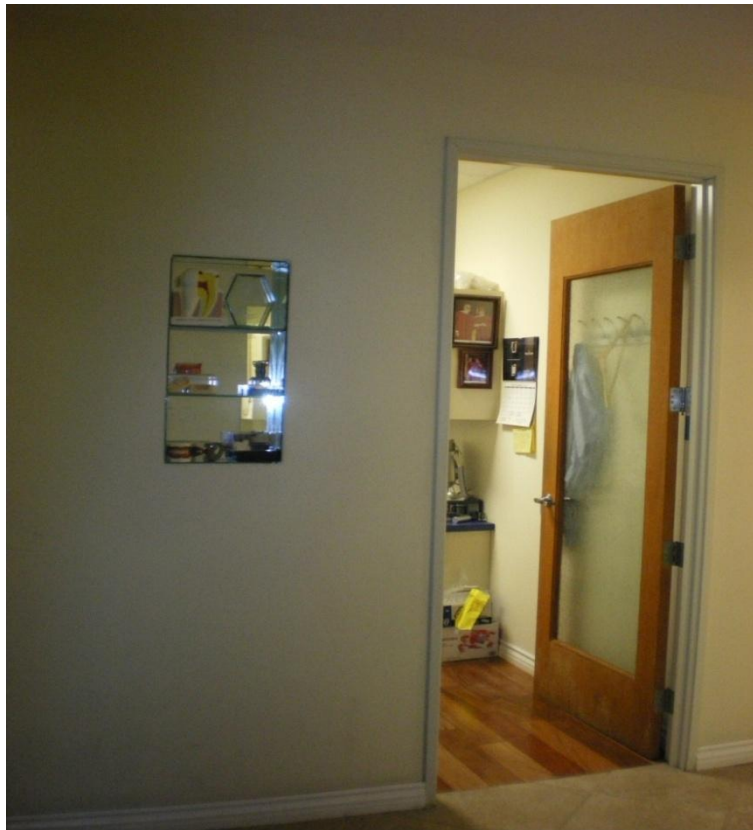


# CHOICE DENTAL CENTERS-STERILIZING ROOM





# CHOICE DENTAL CENTERS



Consultation Room



Implant Surgery Room





# 3D SCAN --ACCURATE DIAGNOSIS



# CHOICE DENTAL CENTERS



Zoom II Whitening System  
Getting your teeth whiter in only ONE hour!

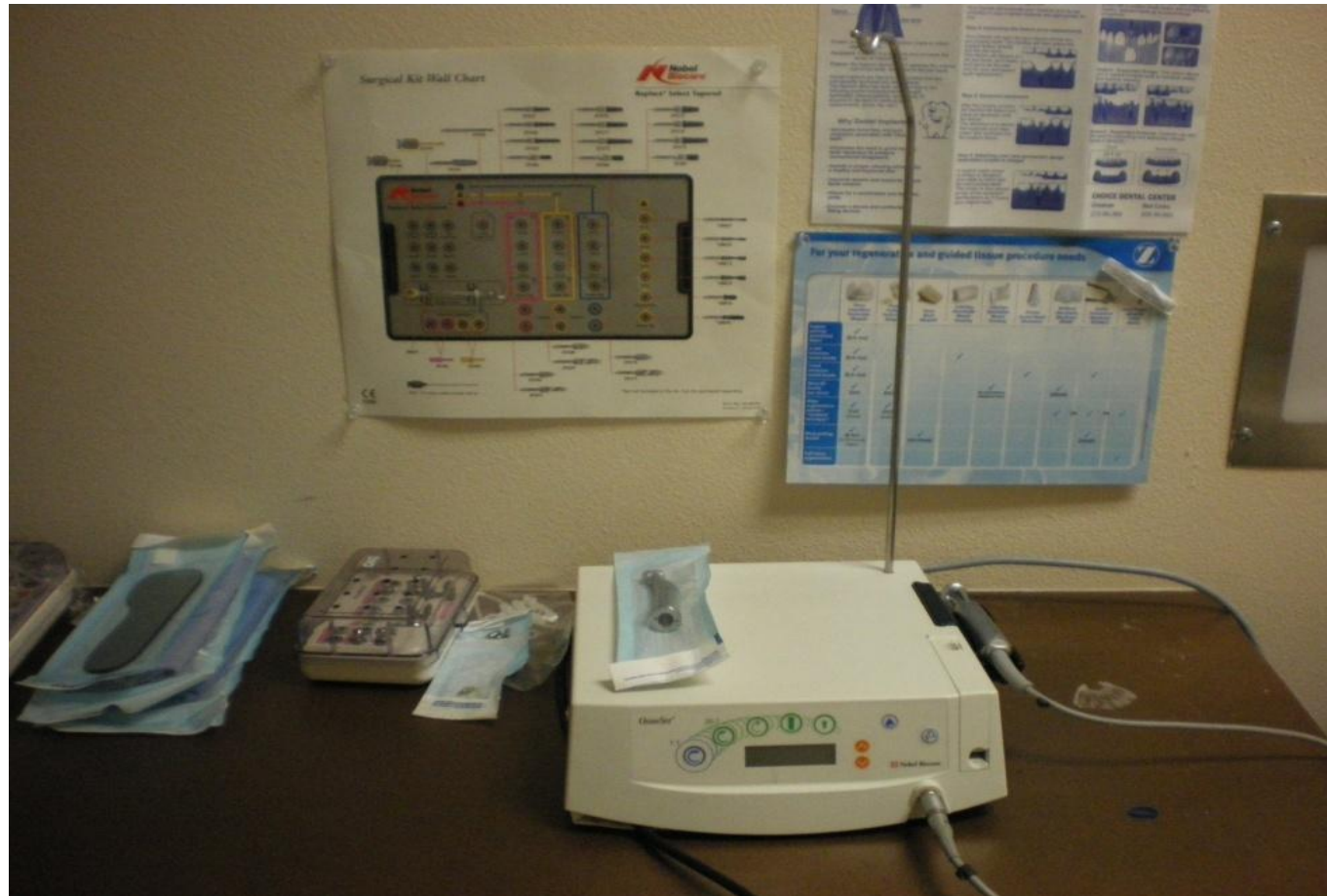




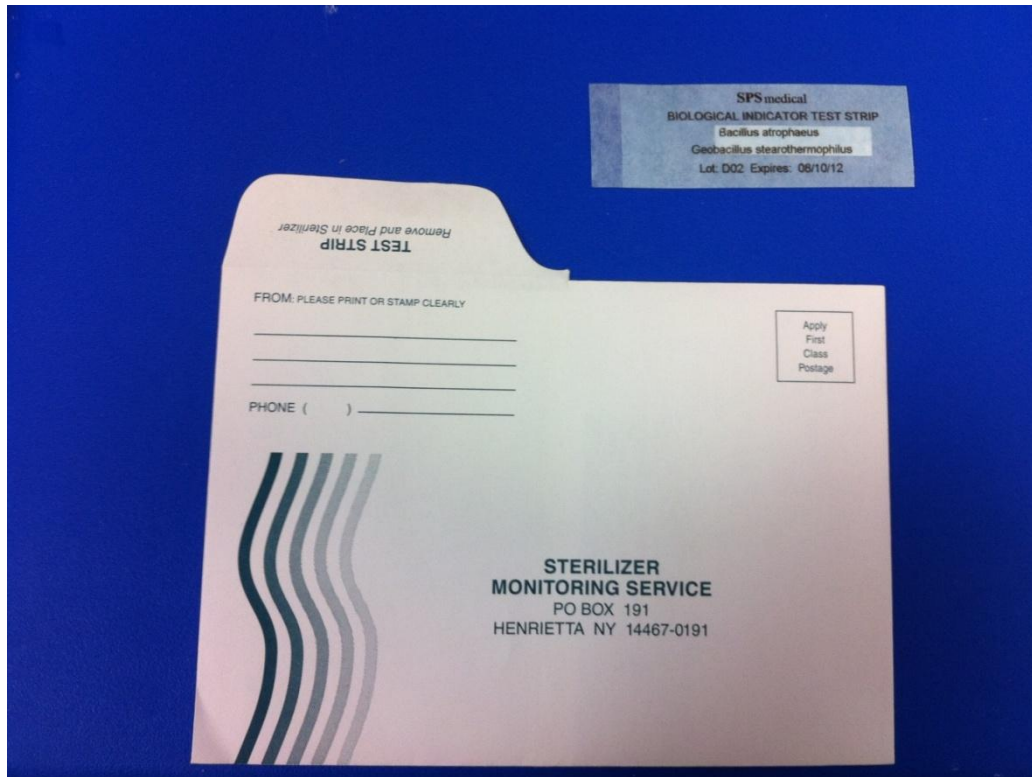
# CHOICE DENTAL CENTERS-ROOT CANAL INSTRUMENTS



# CHOICE DENTAL CENTERS-IMPLANT SURGERY INSTRUMENTS



# CHOICE DENTAL CENTERS

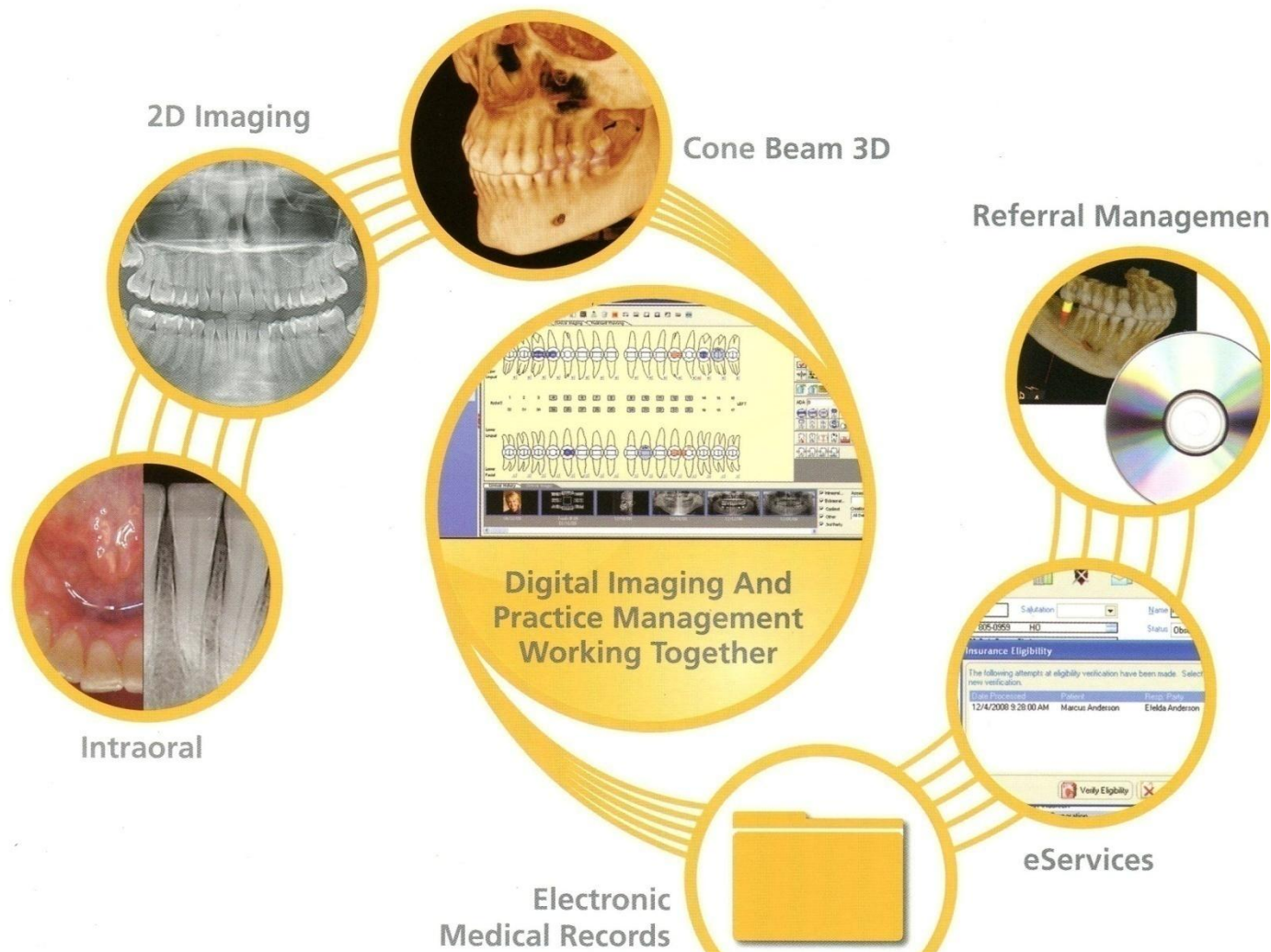


Indicator Strip for  
Sterilizer-  
Sent to Sterilizer  
Monitoring Center  
weekly to evaluate the  
quality of sterilization  
as recommended by the  
Centers for Disease  
Control & Prevention  
(CDC) and American  
Dental Association  
(ADA)



# Totally integrated solutions

Every Carestream Dental product is designed to seamlessly integrate with our imaging and practice management software.



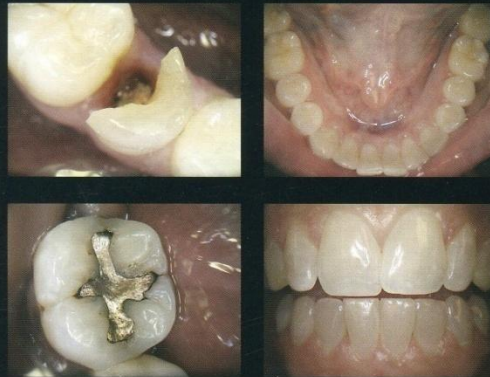
# CS 1500 Intraoral Camera

Available in both wired and wireless models, the CS 1500 intraoral camera combines industry-leading image quality with flexibility to form one easy-to-use camera that truly redefines the way you communicate.



## Promote conversations

From portraits to macro views, the camera delivers consistently clear, high-resolution images that can be easily shared with patients – so they see exactly what you see and are more likely to accept your treatment recommendations.



High quality images in a wide range of views.

## True automation

The camera's true liquid lens autofocus works like the human eye to adjust focus based on the distance between the camera and the object – no manual adjustments required. Meanwhile, the 8-LED lighting system intuitively adjusts to your current lighting conditions to optimize illumination and contrast levels automatically.

## Simple workflow

Since the CS 1500 camera requires no manual adjustments, image capture is easier and faster than ever. The ergonomically designed and lightweight hand piece fits comfortably in either hand and can maneuver even the most hard-to-reach areas. In addition, the camera's single image capture button generates high-resolution images and automatically saves them to your computer or SD card.

## Easy to share and use

Capture still images or videos with the CS 1500 camera and quickly display them on your PC or video monitor. Choose the wireless version for complete freedom of movement, or connect the camera to your computer directly via USB. The wireless CS 1500 camera supports AV and S-Video connections, eliminating the need for computers in every operatory. Whichever option you prefer, the CS 1500 camera is easy to share throughout your practice.



Auto-adjustable 8-LED illumination system.

# CHOICE DENTAL CENTERS- INTRAORAL CAMERA



You can see your teeth  
and gums clearly with  
the intraoral camera.





# CHOICE DENTAL CENTERS-DIGITAL X-RAY



# 2D Imaging Solutions



Simple solutions,  
exceptional images





a new dimension of confidence  
better 3D images for a better practice.

# 3D Imaging Systems

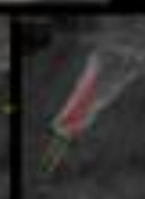
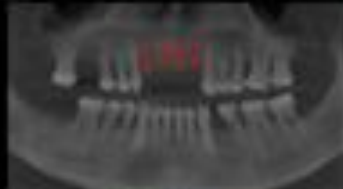
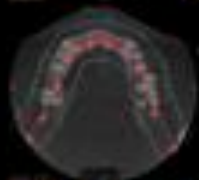




# 3D--SCAN

## Implantology

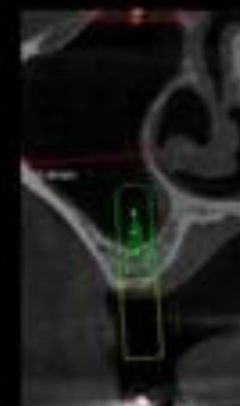
Evaluation of bone volume  
(10 cm x 10 cm)



Localization of anatomical  
obstacles (5 cm x 5 cm)



Planning of a posterior  
implant with the long axis  
and the restorative space  
(5 cm x 5 cm)



Measurement  
to plan sinus  
augmentation  
using 1:1 ratio





# 3D--SCAN

## Impaction and supernumerary



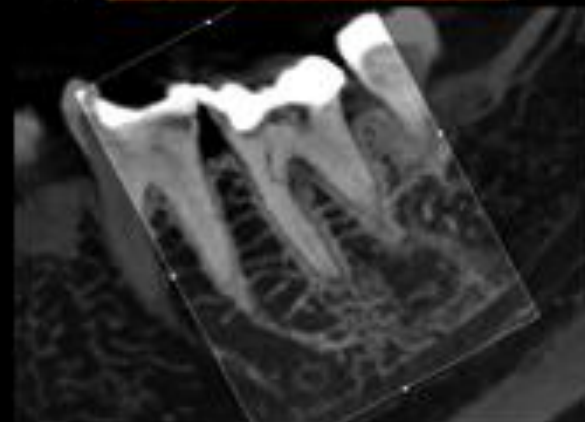
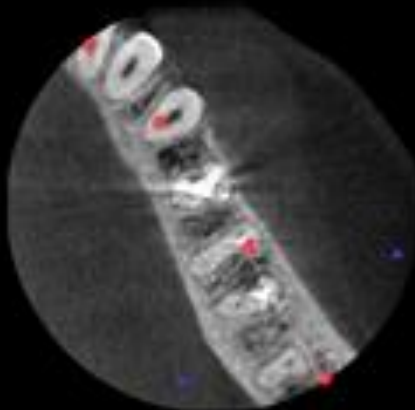
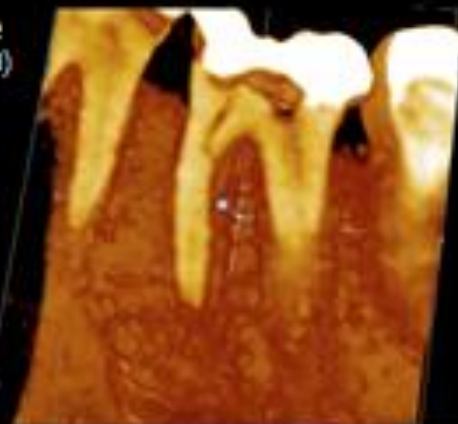
# 3D--SCAN

## Endodontics and periodontics



Untreated disto lingual  
root canal at the origin  
of a cyst (5 cm x 5 cm)

Root fracture  
(5 cm x 5 cm)



# 3D--SCAN

## Oral and maxillofacial surgery

